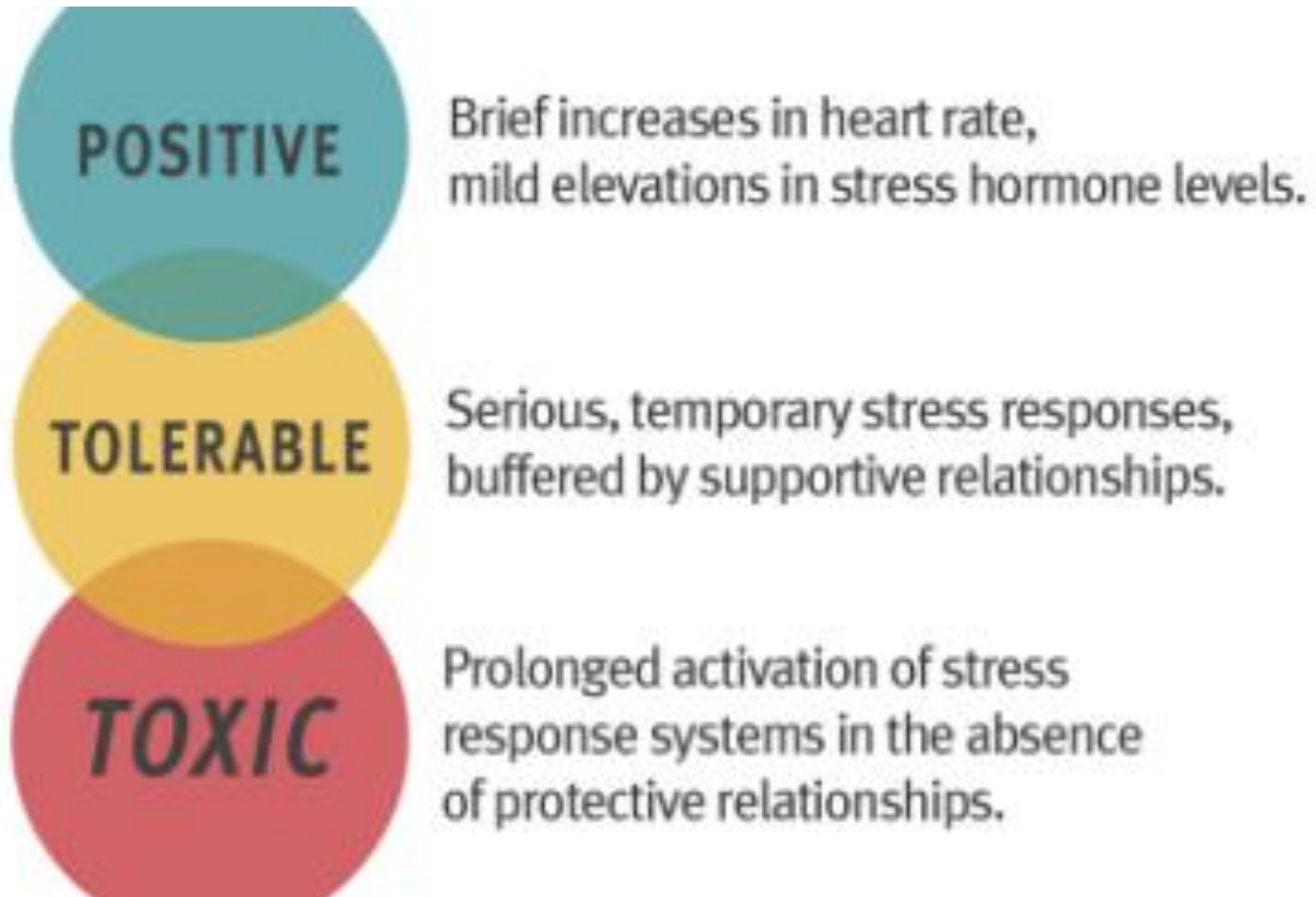
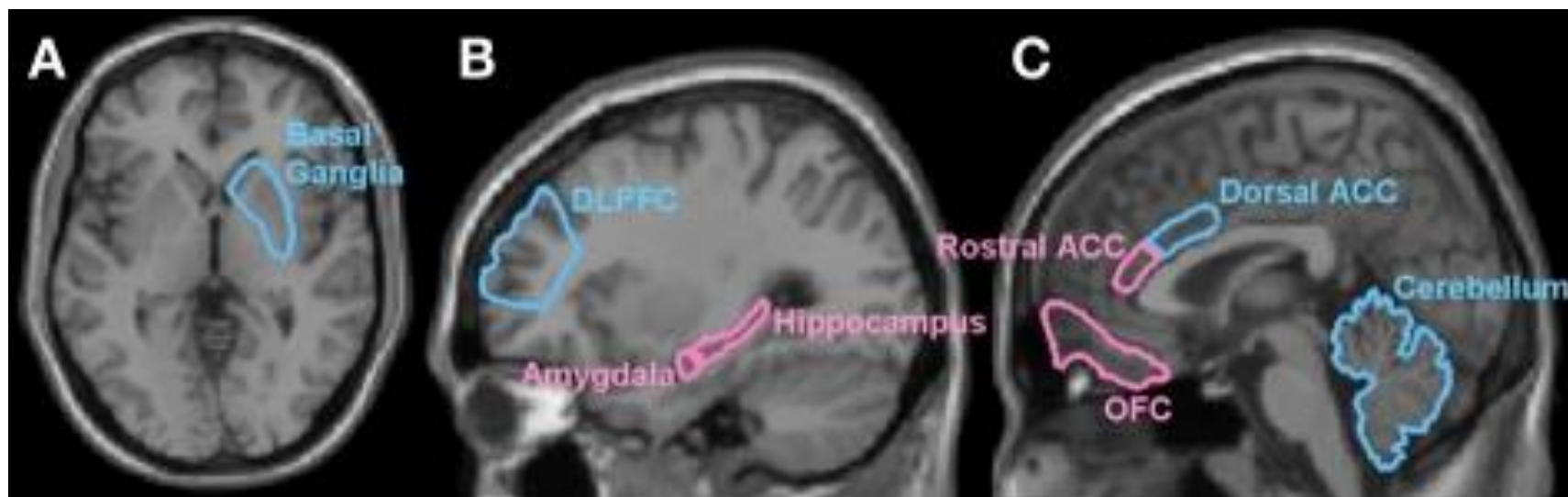


TOXIC STRESS



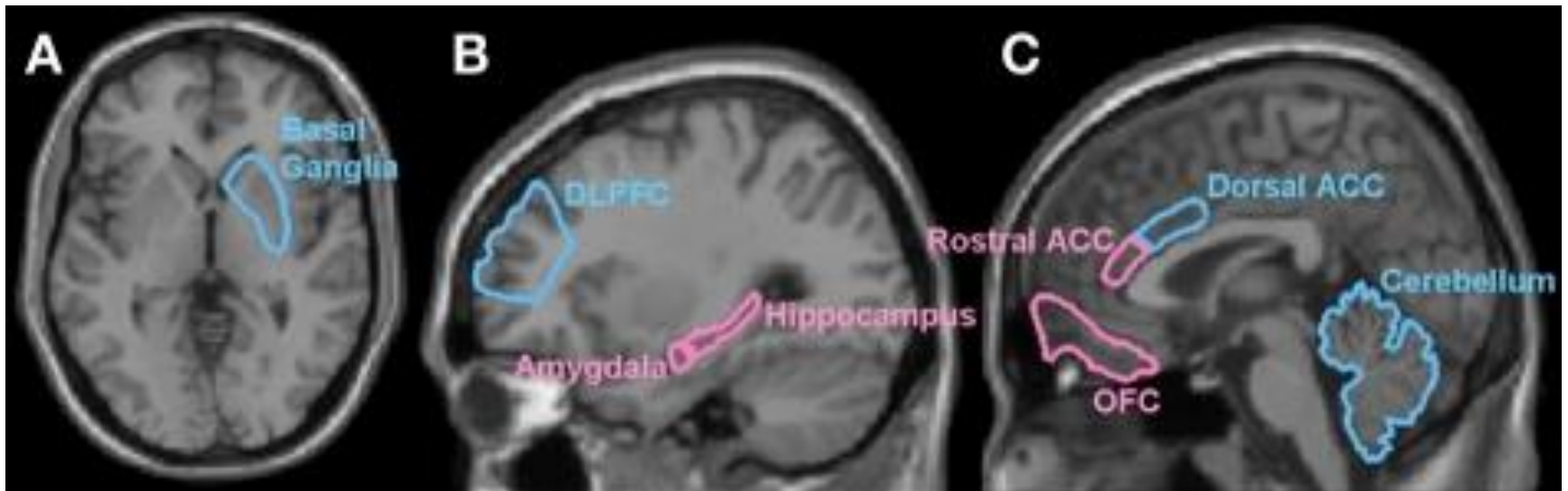
TOXIC STRESS HAS WIDE-SPREAD INFLUENCES ON THE DEVELOPING BRAIN



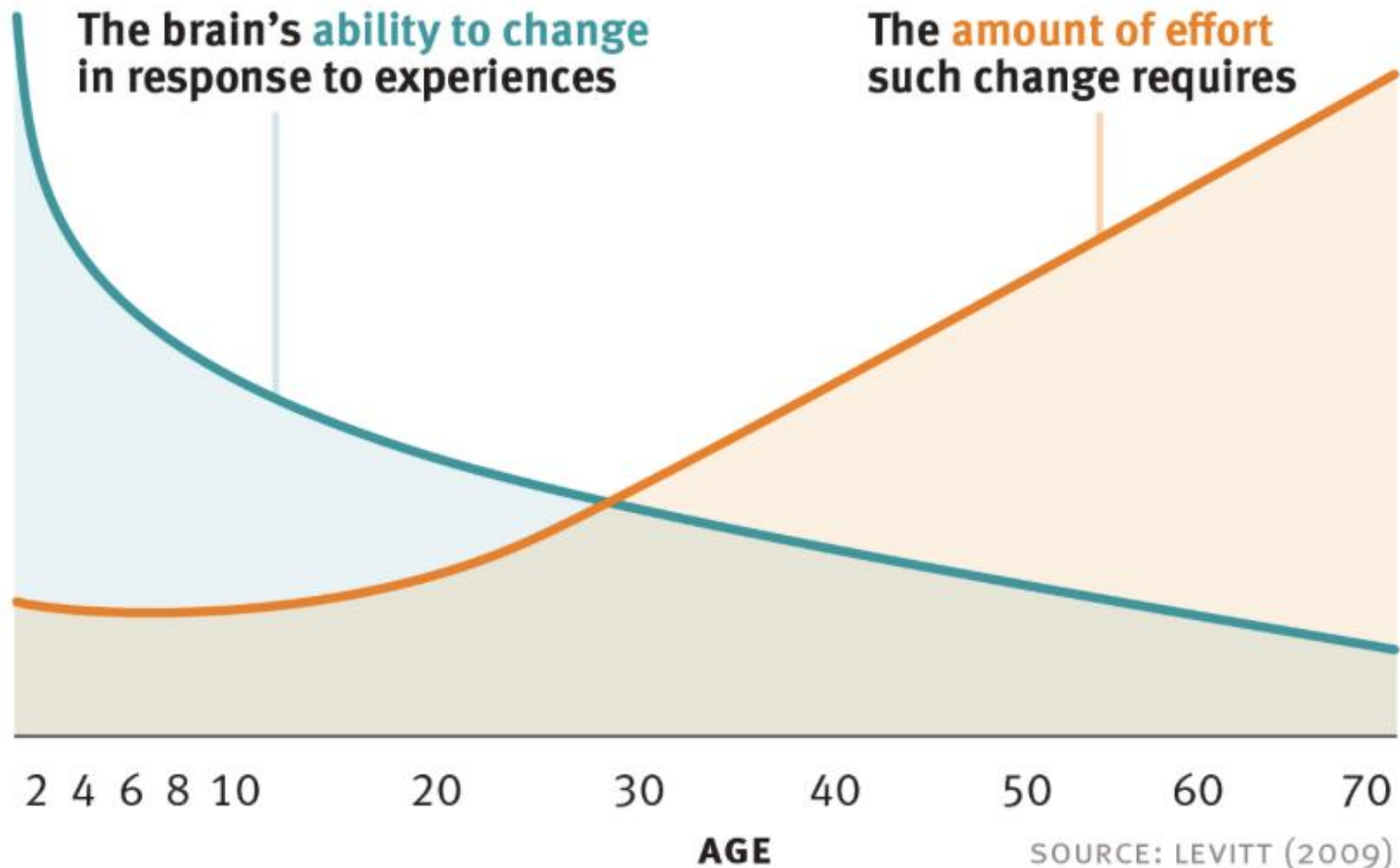
Regions highlighted in pink correspond to fronto-limbic areas involved in emotion and motivation processing and regions highlighted in blue to fronto-striatal brain regions involved in executive functions, working memory, inhibition and attention

Hart & Rubia, 2012

TOXIC STRESS HAS WIDE-SPREAD INFLUENCES ON THE DEVELOPING BRAIN



Regions highlighted in pink correspond to fronto-limbic areas involved in emotion and motivation processing and regions highlighted in blue to fronto-striatal brain regions involved in executive functions, working memory, inhibition and attention



- Recognition
- Systematic assessment
- Diagnosing (treatable) psychiatric disorders among all family members
- Removing silos: "case managers"
- Resourcing